

ACCESS MANAGEMENT PUBLIC HEARING

State Road 10/Atlantic Boulevard

Atlantic Beach, Duval County, Florida

Tuesday, December 10

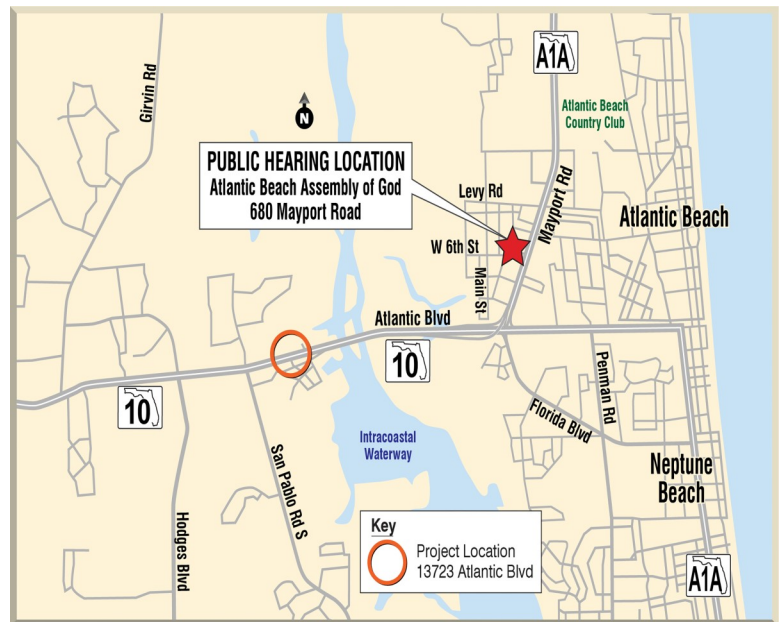
Open House:

4:30 to 6:30 p.m.

Public Comments:

6:30 p.m.

Atlantic Beach Assembly of God
680 Mayport Road, Atlantic Beach,
FL 32233



Drop by anytime between 4:30 and 6:30 p.m. to view displays and discuss the proposed median modification with FDOT staff and project representatives. A public comment period will begin at 6:30 p.m. For more information, contact Julian McKinley at (904) 360-5205 or Julian.Mckinley@dot.state.fl.us.

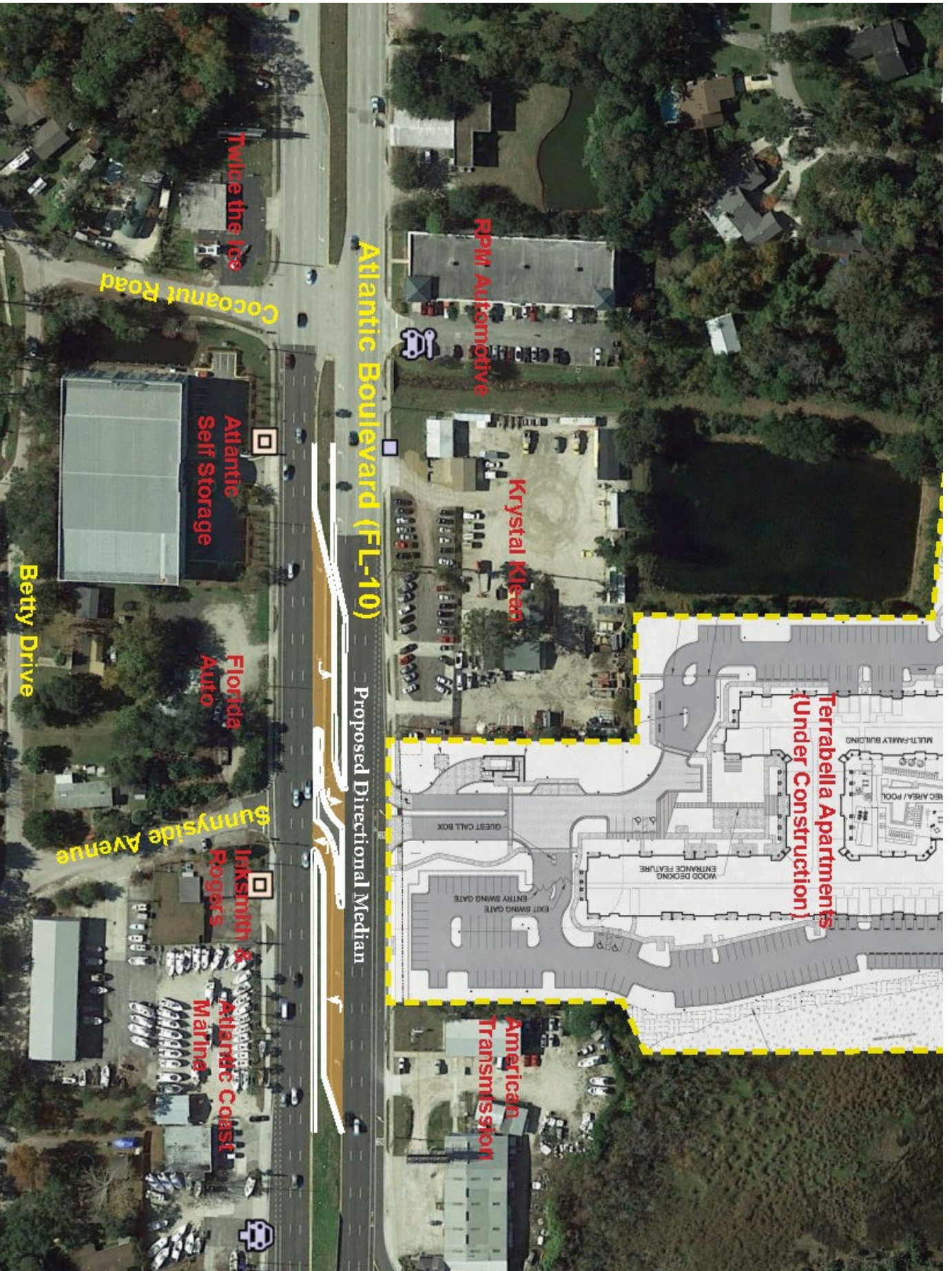
The purpose of the public hearing is to discuss a proposal to change a full median opening to a directional median opening on Atlantic Boulevard (State Road 10) at Sunnyside Avenue as part of constructing the Terrabella Apartment Community. The proposed modifications are required by FDOT to reduce conflicts and meet current median opening spacing standards and will be funded by LIV Development, LLC.

Project documents will be available for review at the public hearing and at www.nflroads.com by November 19, 2019. Persons wishing to submit written statements or other exhibits in place of or in addition to oral statements may do so at the hearing or by sending them to Julian McKinley, 2198 Edison Avenue, Jacksonville, FL 32204. Statements postmarked on or before December 20, 2019 will become part of the public hearing record.

Public participation is solicited without regard to race, color, religion, gender, age, national origin, disability or familial status. Anyone requiring special accommodations should contact Derrick Richardson at Derrick.Richardson@dot.state.fl.us or (904) 360-5457 no later than seven days prior to the hearing.

www.NFLRoads.com





**Terrabella Apartments
(Under Construction)**

FPM Automotive

Krystal Kleen

**American
Transmission**

Atlantic Boulevard (FL-10)

Proposed Directional Median

Twice the Ice

**Atlantic
Self Storage**

**Florida
Auto**

**Inksmith &
Rogers**

**Atlantic Coast
Marine**

Cocoanut Road

Betty Drive

Sunnyside Avenue

MULTI-FAMILY BUILDING
REO AREA / POOL
WOOD DECKING
ENTRANCE FEATURE
EXIT SWING GATE
ENTRANCE SWING GATE
GUEST CALL BOX